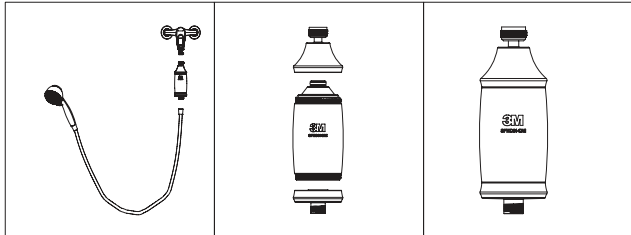


Maintenance

To maintain good flow rate and extend the life of filter, recommend to clean the filter once a month.

Instruction for Cleaning

1. Detach the filter cartridge from shower hose and faucet.
2. Remove the cartridge by turning housing cap counter-clockwise.
3. Hold the filter cartridge under a faucet and turn the water on.
4. Keep flushing for 20 seconds.
5. Turn the shower filter over and flush the other direction.
6. Put the filter cartridge into housing body. Tighten the housing caps together.



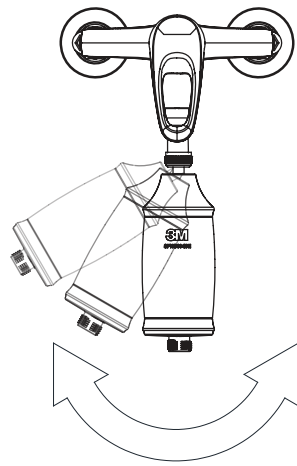
Filter Cartridge replacement

Change the disposable filter cartridge every six (6) months, at the rated capacity or sooner if a noticeable reduction in flow rate occurs. Local water conditions and actual volume of water can affect filter cartridge life and replacing it is recommended if noticeable drop in pressure occurs at the shower head.

Troubleshooting

Problem	Possible cause	Action
Flow rate drop/ No flow	Filter is blinded	Clean filter cartridge
	Leakage on the connection	Tighten the connection
Water leakage inlet /outlet	Loose connection	Tighten the connection
Notice present of chlorine	Filter cartridge is out of use.	Replace filter cartridge.

Feature



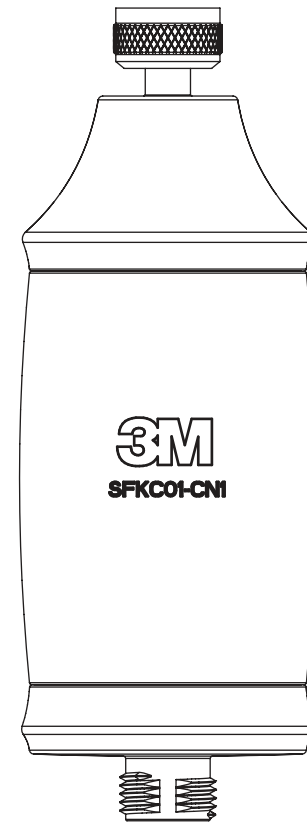
The SFKC01-CN1 shower filter incorporates a robust ball joint to provide easy angle adjustment.

3M

Separation and Purification Sciences Division
3M Thailand Limited
12th Floor, Serm-Mit Tower
159 Asoke-Montri Road
Klongtoey Nua, Wattana, Bangkok 10110
0-2260-8577 Fax 0-2261-7535
www.3m.com/th, www.facebook.com/3Mthailand

3M Science.
Applied to Life.™

Installation & Operating Instruction for Shower Filter (SFKC01-CN1)



Owner's note : Please retain instruction for future operation and maintenance

3M Water Filter
Open Size: 300mm x 210mm H
Closed Size: 100mm x 210mm H

Safety information

Read, understand and follow all safety information contained in these instructions prior to installation and use of the Shower filter (SFKC01-CN1). Retain these instructions for future reference.

Intended use:

The SFKC01-CN1 shower filter is designed to reduce chlorine, odors, and dirt from your shower water and has not been evaluated for other uses.

Explanation of signal word consequences



Warning

Indicates a potentially hazardous situation, which, if not avoided, could result in death or serious injury and/or property damage.



Caution

Indicates a potentially hazardous situation, which, if not avoided, may result in property damage.

Warning

- This system is not intended to be used as a drinking water treatment unit.
- While testing was performed under laboratory conditions. Actual performance may vary.

Caution

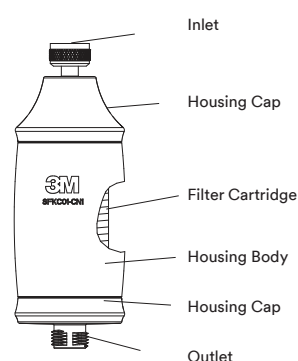
- Read and follow all Instructions before installation and use of this system to reduce the risk of water leakage of flooding and to ensure optimal filter performance.
- Protect from freezing, remove filter cartridge when temperatures are expected to drop below 4.4 °C (40 °F).
- Do not install on hot water supply lines. The maximum operating water temperature of this filter system is 50 °C (122 °F).
- Installation and use **MUST** comply with all state and local plumbing codes.
- Do not install if water pressure exceeds 862 kPa (125 psi).
- Contact a plumbing professional if you are uncertain as to how to check your water pressure.
- Do not use a torch or other high temperature sources near filter system, cartridges, plastic fittings or plastic plumbing.

Specification/Performance

The SFKC01-CN1 shower filter contains KDF 55 media was tested by WQA according to NSF/ANSI 177 for reduction of free chlorine. Material of housing and shell is listed in FDA 21CFR.

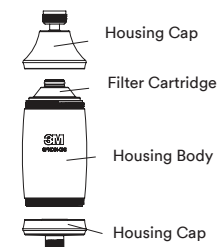
Model	SFKC01-CN1
Use for	City water
Operating Pressure	138 - 860 kPa
Operating Temperature	5 - 50 °C
Connection size	1/2"
Weight	430 g
Dimension (Dia. x L)	64.6 mm x 176.4 mm
Choline remaining	0
Flow rate (liter/min)	8
Capacity (liters)	50,000

Filter Components

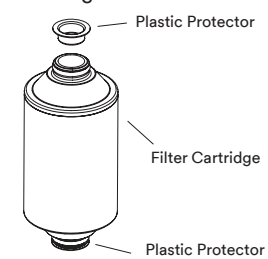


Installation

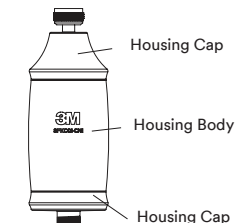
1. Unscrew housing caps from housing body. (Fig 1)



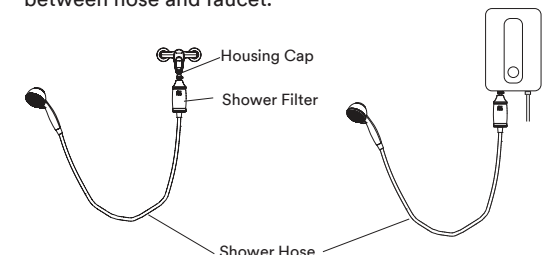
2. Take out the filter cartridge out and remove plastic protector caps from the filter cartridge.



3. Screw the top, body, bottom parts together. Firm hand tighten.



4. Unscrew the hose from faucet and install the Shower filter between hose and faucet.



5. Turn on water supply valve and check for leaks.
6. Allow the water to run through the filter for 30 to 60 seconds before the first use.

3M Water Filter
Open Size: 300mm x 210mm H
Closed Size: 100mm x 210mm H